



ALMY BETON ALMY CONCRETE



FABRIKA BAUMY BAUMY FACTORY



FABRIKA BETONSKE GALANTERIJE
FACTORY OF CONCRETE PRODUCTS



ALMY METALI ALMY METALS



®
proizvodno transportno
trgovinsko preduzeće

ALMY MANUFACTURING

ALMY PROIZVOĐNJA



PROIZVODNJA
MANUFACTURING



DOSTAVA
DELIVERY



UGRADNJA
INSTALLATION

ALMY BETON

ALMY BETON posjeduje vlastite pogone za proizvodnju betona u Sarajevu, Zenici i Zavidovićima, koje su opremljene najmodernijom tehnologijom, sukladno evropskim standardima. U našim betonarama koristimo samo najkvalitetnije tipove cementa. Vodimo računa o granulometrijskom sastavu agregata i koristimo savremene mjerne uređaje kako bismo u svakom trenutku obezbijedili precizno doziranje ulaznih komponenti betona i isporučili tačnu i naručenu količinu betona svojim korisnicima.

Posjedujemo deset pumpi za ispumpavanje betona do 45 metara visine, trideset miksera za prevoz betona, te svu opremu potrebnu za ugradnju betona. Sve navedeno omogućava nam da proizvedemo i distribuiramo preko 600 m³ betona/1h, što nas čini liderima u proizvodnji betona na području cijele Bosne i Hercegovine. Naša kompanija je također dobitnik **QUDAL-QUALITY MEDAL**-a za proizvodnju betona i betonske galanterije.

Dobitnici smo i prestižnog sertifikata o fabričkoj kontroli proizvodnje betona izdatog od strane **GIT**-ovog instituta za građevinarstvo, građevinske materijale i nemetale iz Tuzle, kojeg je ovlastio **BATA institut za certificiranje proizvodnje i proizvoda od betona**.

Kompletna tvornička proizvodnja se obavlja prema novim BAS standardima koji su usklađeni prema EU normama: **BAS EN 206:2013+A1:2016**.

Prošlogodišnja proizvodnja sektora Almy Beton iznosi 130 000 m³.

ALMY BETON has its own concrete production plants in Sarajevo, Zenica, and Zavidovići, all equipped with state-of-the-art technology, complying with European standards. In our concrete plants, we exclusively use the highest-quality types of cement. We meticulously pay attention to the granulometric composition of the aggregates and employ modern measuring devices to ensure the precise dosing of concrete components, consistently delivering the exact ordered amount of concrete to our customers at all times. We have ten concrete pumps for pumping up to a height of 45 meters, thirty mixers for concrete transport, and all the equipment necessary for concrete installation.

All of the foregoing allows us to produce and distribute over 600 m³ of concrete per hour, making us the leaders in concrete production in Bosnia and Herzegovina. Our company is also the winner of the **QUDAL-QUALITY MEDAL** for the production of concrete and concrete products.

Additionally, we are the winner of a prestigious certificate for factory control of concrete production issued by the **GIT Institute** for Construction, Construction Materials, and Nonmetals from Tuzla, authorized by the **BATA Institute to certify the production of concrete and concrete products**.

Complete factory production is performed according to new BAS standards that comply with EU norms:

BAS EN 206:2013+A1:2016.

Last year's production of Almy Beton sector amounts to 130 000 m³.

0800 23457

BESPLATNI INFO BROJ FREE INFO NUMBER

ALMY BETON - BETONSKE BAZE ALMY CONCRETE - CONCRETE PLANTS



BETONSKA BAZA | CONCRETE PLANT "ZENICA - LIPICE 1"

MARKA BETONARE | CONCRETE PLANT BRAND: **ELKON, ELKOMIX 60** 🇷🇸

KAPACITET | CAPACITY: **60 m³/h**

ZAPREMINA MJEŠALICE | MIXER VOLUME: **1m³**

GODINA INSTALACIJE | YEAR OF INSTALLATION: **2004.**

RAD BETONARE JE NA AUTOMATSKOM PRINCIPU | PLANT WORK IS ON AN AUTOMATIC BASIS

BROJ KOŠEVA ZA AGREGAT | THE NUMBER OF AGGREGATE BOXES: **4**

TEL: **+387 32 676 259** MOB: **+387 60 31 96 525** MOB: **+387 61 101 369** EMAIL: proizvodnja@almy.ba



BETONSKA BAZA | CONCRETE PLANT "ZENICA - LIPICE 2"

MARKA BETONARE | CONCRETE PLANT BRAND: **AMMANN** 🇨🇭

KAPACITET | CAPACITY: **150 m³/h**

ZAPREMINA MJEŠALICE | MIXER VOLUME: **2m³**

GODINA INSTALACIJE | YEAR OF INSTALLATION: **2016.**

RAD BETONARE JE NA AUTOMATSKOM PRINCIPU | PLANT WORK IS ON AN AUTOMATIC BASIS

BROJ KOŠEVA ZA AGREGAT | THE NUMBER OF AGGREGATE BOXES: **5**

TEL: **+387 32 676 259** MOB: **+387 60 31 96 525** MOB: **+387 61 101 369** EMAIL: proizvodnja@almy.ba



BETONSKA BAZA | CONCRETE PLANT "ZENICA - RASPOTOČJE"

MARKA BETONARE | CONCRETE PLANT BRAND: **ELKON, ELKOMIX 90** 🇷🇸

KAPACITET | CAPACITY: **90 m³/h**

ZAPREMINA MJEŠALICE | MIXER VOLUME: **1,5m³**

GODINA INSTALACIJE | YEAR OF INSTALLATION: **2016.**

RAD BETONARE JE NA AUTOMATSKOM PRINCIPU | PLANT WORK IS ON AN AUTOMATIC BASIS

BROJ KOŠEVA ZA AGREGAT | THE NUMBER OF AGGREGATE BOXES: **5**

TEL: **+387 32 676 259** MOB: **+387 60 31 96 525** MOB: **+387 61 101 369** EMAIL: proizvodnja@almy.ba



BETONSKA BAZA | CONCRETE PLANT "ZAVIDOVIĆI"

MARKA BETONARE | CONCRETE PLANT BRAND: **ELKON, ELKOMIX QUICK MASTER 60** 🇷🇸

KAPACITET | CAPACITY: **60 m³/h**

ZAPREMINA MJEŠALICE | MIXER VOLUME: **1m³**

GODINA INSTALACIJE | YEAR OF INSTALLATION: **2022.**

RAD BETONARE JE NA AUTOMATSKOM PRINCIPU | PLANT WORK IS ON AN AUTOMATIC BASIS

BROJ KOŠEVA ZA AGREGAT | THE NUMBER OF AGGREGATE BOXES: **4**

TEL: **+387 32 864 335** MOB: **+387 60 31 96 582** EMAIL: proizvodnja@almy.ba



BETONSKA BAZA | CONCRETE PLANT "SARAJEVO - HADŽIĆI"

MARKA BETONARE | CONCRETE PLANT BRAND: **ELKON, ELKOMIX 120** 🇷🇸

KAPACITET | CAPACITY: **120 m³/h**

ZAPREMINA MJEŠALICE | MIXER VOLUME: **2m³**

GODINA INSTALACIJE | YEAR OF INSTALLATION: **2017.**

RAD BETONARE JE NA AUTOMATSKOM PRINCIPU | PLANT WORK IS ON AN AUTOMATIC BASIS

BROJ KOŠEVA ZA AGREGAT | THE NUMBER OF AGGREGATE BOXES: **4**

MOB: **+387 60 31 96 541** MOB: **+387 61 988 865** EMAIL: proizvodnja@almy.ba

REFERENC LISTA BETONAŽA

REFERENCE LIST OF PERFORMED WORKS

ALMY BETON



ALMY

®
proizvodno transportno
trgovinsko preduzeće

Bosna Sema Sarajevo Bosna Sema Sarajevo

Muzej Grada Zenice Museum of the City of Zenica

Pravni i ekonomski fakultet Zenica Faculty of Law and Economics in Zenica

Akova Impex Sarajevo Akova Impex Sarajevo

Raiffeisen banka Zenica Raiffeisen bank Zenica

Motel Almy Motel Almy

Arcelor Mittal Zenica (Valjaonice, Čeličana...) Arcelor Mittal Zenica (Rolling Mills, Steel Mill...)

Messer BH Gas - Zenica Messer BH Gas - Zenica

ATOM Vitez Atom Vitez

Bellona Sarajevo Bellona Sarajevo

Regionalna deponija Mošćanica - Zenica Regional landfill Mošćanica - Zenica

Sportsko - rekreativni centar N/FSBiH (Crkvičko brdo Zenica) Sports and recreation center N/FSBiH (Crkvičko brdo Zenica)

Kantonalna bolnica Zenica (Magnetna rezonanca, Radiologija, Centar za odvikavanje...) Zenica Cantonal Hospital (Magnetic Resonance, Radiology, Rehab Center...)

MHE Čajdraš - Zenica Small Hydro Power Plant Čajdraš - Zenica

Stambeni kompleks Crkvice (5 lamela) Residential complex Crkvice (5 slats)

Kazneno-popravni zavod Zenica (Paviljon C) KPZ Zenica (Pavilion C)

Koridor Vc (poddionica Bilješevo-Drivuša) Corridor Vc (subdivision Bilješevo-Drivuša)

GGM Zenica GGM Zenica

Zgrada Carica Visoko Carica Visoko Building

Stambeni kompleks Makovi - Crkvičko brdo Residential complex Makovi - Crkvičko brdo

Šoping centar Robot Zenica Shopping center Robot Zenica

RMU Zenica (Raspotočje, Stranjani, Stara Jama) Zenica Coal mine (Raspotočje, Stranjani, Stara Jama)

MHE Bistričak - Zenica Small Hydro Power Plant Bistričak - Zenica

Robna kuća Zeničanka (sanacija) Zeničanka department store (renovation)

Sanacija stadiona Bilino Polje Renovation of the Bilino Polje stadium

Dom zdravlja Stari Grad - Sarajevo Health Cetner Stari Grad - Sarajevo

Centar BH Telecom Travnik Center BH Telecom Travnik

Stambeno-poslovni objekat Blatuša Residential and business building Blatuša

Uređenje korita rijeke Bosne (Maglaj i Zenica) Arrangement of the river bed of Bosna (Maglaj and Zenica)

FIS centar Brankovići Žepče FIS Center Brankovići Žepče

Internati Radakovo (muški i ženski) Radakovo boarding schools (male and female)

Objekat Bajra - Zenica "Bajra" facility - Zenica

Sanacija mostova u Žepču i Topčić Polju Repair of bridges in Žepče and Topčić Polje

Azil za pse Stranjani Asylum for dogs Stranjani

Centar za djecu sa posebnim potrebama Žepče Center for children with special needs Žepče

Zgrada Općine Kakanj Kakanj Municipality building

Melik Group Visoko Melik Group Visoko

HM Promet Maglaj HM Promet Maglaj

TE Kakanj - sanacije TE Kakanj - renovation

IGM d.o.o. Visoko - poslovni objekat IGM d.o.o. Visoko - business building

Teretna i servisna stanica Željeznica FBiH u Zenici Cargo and service station of the FBiH Railway in Zenica



Hotel „Nomad“, Bjelašnica “Nomad” hotel, Bjelašnica
Stambeni kompleks za zbrinjavanje Roma (5 zgrada) Brist - Zenica Residential building (5 buildings) Brist - Zenica
Benzinske pumpe ENERGOPETROL (3 pumpe) Petrol pumps ENERGOPETROL (3 pumps)
HIFA PETROL Zenica (2 pumpe) HIFA PETROL Zenica (2 pumps)
Benzinska pumpa INA Nemila Gas station INA Nemila
Sanacija korita rijeke u Orahovici Renovation of the river-bed in Orahovica
Zgrada Tužilaštva u Zenici The Prosecutor’s Office building in Zenica
DŽAS - com Zenica - poslovni objekat DŽAS - com Zenica business building
TOLA Company - poslovni objekat TOLA Company - business facility
NATRON HAYAT Maglaj - proizvodni pogon NATRON HAYAT Maglaj - production facility
PRIMA COMMERCE Zenica - proizvodni pogon PRIMA COMMERCE Zenica - production plant
Green City Sarajevo Green City Sarajevo
Sigurna kuća MEDICA Zenica Safe House MEDICA Zenica
Bazeni za vodu: Briznik, Dobriljevo, Željezno Polje, Arnauti... Water pools: Briznik, Dobriljevo, Željezno Polje, Arnauti...
Poliklinika SUNCE Zenica Polyclinic SUNCE Zenica
Čevabdžinica Bešlić Crkvice Čevabdžinica Bešlić Crkvice
HAS Komerc Mokušnice HAS Komerc Mokušnice
EKRAN Zenica EKRAN Zenica
TISAL Busovača TISAL Busovača
NUTAL Počulica - Vitez Nutal Počulica - Vitez
RMU Kakanj (Vrtlište, Begići...) Coal Mine Kakanj (Vrtlište, Begići...)
Stambeno-poslovni objekat DEELA Kakanj Residential and commercial building DEELA Kakanj
Stadion N.K. Mladost Doboj Kakanj Stadium N.K. Mladost Doboj Kakanj
STRONG AUTO Zenica - poslovni objekat STRONG AUTO Zenica - business facility
PHARMACIA Zenica - poslovni objekat PHARMACIA Zenica - business facility
Stambeni objekat Kasina 5 Zenica Residential building Kasina 5 Zenica
Islamski Centar Zenica Islamic Center Zenica
Stadion N.K. Nemila Stadium N.K. Nemila
Stadion N.K. Vitez Stadium N.K. Vitez
Betoniranje puteva u skoro svim MZ na prostoru Općine Zenica Concreting of roads in almost all Municipalities in the area of the Municipality of Zenica
Most u Željeznom Polju The bridge in Željezni Polje
Koridor Vc (naplatne rampe Drivuša, Bilješevo, Kakanj) Corridor V-C (Drivuša, Bilješevo, Kakanj toll plazas)
Objekat MUP-a, Lukovo Polje MUP building, Lukovo Polje
Objekat Bajra- Zenica Bajra-Zenica facility
Koridor Vc (dionica Klopče - Donja Gračanica) - Izvođač Euroasfalt Corridor Vc (section Klopče - Donja Gračanica) - Contractor Euroasfalt
Koridor Vc (dionica Klopče - Donja Gračanica) - Izvođač Strabag Corridor Vc (section Klopče - Donja Gračanica) - Contractor Strabag
Vatrogasni dom ; investitori Eufor& Butmir Camp Fire station; investors Eufor& Butmir Camp
Hifa benzinska pumpa i Terminal za Kerozin, Sarajevo Hifa gas station and Terminal for Kerosene, Sarajevo
Kolektor otpadnih voda na Bjelašnici Waste water collector in Bjelašnica
Objekat „Nikšić“, Bjelašnica “Nikšić” facility, Bjelašnica
Objekat „Mountain Wings“ Bjelašnica Object “Mountain Wings” Bjelašnica
Hotel „Nomad“, Bjelašnica Hotel “Nomad”, Bjelašnica
Dom zdravlja Stari Grad - Sarajevo Stari Grad - Sarajevo health center
Izgradnja stambeno-poslovnog objekta na lokalitetu Šip Construction of a residential and commercial building in Šip locality

Aparthotel Ris , Bjelašnica Aparthotel Ris, Bjelašnica

Apartment building Bjelašnica Babin do Apartment building Bjelašnica Babin do

Residential and commercial building Vučica Bjelašnica Residential and commercial building Vučica Bjelašnica

Roof Garden Trebević Roof Garden Trebević

Corridor Vc - section Poprikusa-Zenica north - contractor Hering & Azvirt LLC Corridor Vc - section

Poprikusa-Zenica north - contractor Hering & Azvirt LLC

Corridor Vc- Nemila - contractor HGG Corridor Vc- Nemila - contractor HGG

PHARMAMED Travnik PHARMAMED Travnik

IPF Zenica Radakovo IPF Zenica Radakovo

ZIM d.d. Zenica ZIM d.d. Zenica



BAUMY®

FABRIKA BAUMY | BAUMY FACTORY

FABRIKA BAUMY | BAUMY FACTORY

TEL. / FAX: +387 32 864 224

EMAIL: info@baumy.ba

Moderna tehnologija, edukovani i stručni zaposlenici, sistematski proces proizvodnje i naravno visokokvalitetni proizvodi su karakteristike brenda Baumy. Kompletna proizvodnja je automatizovana u modernoj proizvodnoj hali površine 1.500 m².

BAUMY PRODAJA | BAUMY SALES DEPARTMENT

TEL.: +387 32 423 177

FAX: +387 32 423 187

EMAIL: info@baumy.ba

Modern technology, educated and professional employees, a systematic production process and, of course, high-quality products characteristics of the Baumy brand. Complete production is automated in a modern production hall with an area of 1,500 m².

BOJE ZA ZIDOVE I FASADE PAINTS FOR WALLS AND FACADES

MYPOL



**BIJELA BOJA ZA
UNUTRAŠNJE
ZIDOVE**

WHITE PAINT FOR
INTERIOR WALLS

MY
WHITEPOL



**BIJELA BOJA ZA
UNUTRAŠNJE
ZIDOVE**

WHITE PAINT FOR
INTERIOR WALLS

MYPEARL



**VODOPERIVA
BIJELA BOJA ZA
UNUTRAŠNJE
ZIDOVE**

WASHABLE WHITE
PAINT FOR
INTERIOR WALLS

MYLATEX
SATEN



**LATEX BOJA ZA
UNUTRAŠNJE
ZIDOVE**

LATEX PAINT FOR
INTERIOR WALLS

MYFAS



**VISOKOKVALITETNA
BIJELA FASADNA
BOJA**

HIGH QUALITY
WHITE FACADE

MYBETON
TON



**VISOKOKVALITETNA
BOJA ZA BETON
HIGH QUALITY PAINT
FOR CONCRETE
SURFACES**



DEKORATIVNI ZAVRŠNI MALTERI

DECORATIVE FINISHING PLASTER

MYAKRIL



**DEKORATIVNI
AKRILNI MALTER**
DECORATIVE
ACRYLIC PLASTER

MYKULIR



**AKRILNI
DEKORATIVNI
FASADNI MALTER**
ACRYLIC
DECORATIVE
FACADE PLASTER

MYSILIKAT



**DEKORATIVNI
SILIKATNI MALTER**
ACRYLIC
SILICAT PLASTER

MYSILIKON



**DEKORATIVNI
SILIKONSKI
MALTER**
ACRYLIC SILICON
PLASTER

MYEDELPUTZ



**STRUKTURNI
MINERALNI MALTER**
STRUCTURALMINER-
AL PLASTER

IMPREGNACIJE IMPREGNATIONS

MYKERA



**DEKORATIVNI
AKRILNI MALTER**
DECORATIVE
ACRYLIC PLASTER

MYGRUND



**AKRILNI
DEKORATIVNI
FASADNI MALTER**
ACRYLIC
DECORATIVE

MYBETON
KONTAKT



**DEKORATIVNI
SILIKATNI MALTER**
ACRYLIC
SILICAT PLASTER

MY
HIDROSTOP



**DEKORATIVNI
SILIKONSKI
MALTER**
ACRYLIC SILICON
PLASTER

MY
SNKONTAKT



**STRUKTURNI
MINERALNI MALTER**
STRUCTURAL
MINERAL PLASTER

MASE ZA IZRAVNAVANJE I FUG MASA

LEVELING COATINGS AND GROUT

myGLETIX



GLET MASA
MATTER FOR
SMOOTHING

MYGLETIX
PREMIUM



**POLUDISPERZIONA
GLET MASA**
HALF
DISPERSIVE MATTER
FOR SMOOTHING

myNIVELIR



**MASA ZA
NIVELIRANJE**
LEVELING MATTER

MYFUG MASA
PREMIUM



**MASA ZA
UNUTRAŠNJE I
VANJSKO FUGIRANJE**
MATTER FOR
INTERIOR AND
EXTERIOR GROUTING

CEMENTNA LJEPILA CEMENT ADHESIVES



LJEPILO ZA KERAMIKU STANDARD ADHESIVE FOR CERAMIC TILES STANDARD | **LJEPILO ZA KERAMIKU ECONOMIK** ADHESIVE FOR CERAMIC TILES ECONOMIC | **LJEPILO ZA KERAMIKU FLEX** ADHESIVE FOR CERAMIC TILES FLEX | **LJEPILO ZA KERAMIKU FLEX ECONOMIK** ADHESIVE FOR CERAMIC TILES FLEX ECONOMIC | **BIJELO LJEPILO ZA KERAMIKU FLEX WHITE** ADHESIVE FOR CERAMIC TILES FLEX



LJEPILO ZA STIROPOR WDVS ADHESIVE FOR STYROFOAM WDVS | **LJEPILO ZA LIJEPLJENJE STIROPORA I UTAPANJE MREŽICE** ADHESIVE FOR STYROFOAM AND FACADE MESH | **LJEPILO ZA SIPOREX PLOČE** ADHESIVE FOR SIPOREX TILES | **LJEPILO ZA MREŽICU** ADHESIVE FOR FACADE MESH | **BIJELO LJEPILO ZA MREŽICU WHITE** ADHESIVE FOR FACADE MESH | **VODONEPROPUSNO LJEPILO** ADHESIVE FOR FACADE MESH

MAŠINSKI MALTERI I ESTRIH MACHINE MORTARS



GLETANI GIPSANI MALTER GLITTER PLASTER MORTAR | **GIPSANI MALTER** GLITTER MORTAR | **MAŠINSKI MALTER** MACHINE MORTAR | **KREČNO CEMENTNI MALTER** CALX CEMENT MORTAR | **CEMENTNI MALTER** CEMENT MORTAR | **KREČNO CEMENTNI MALTER FINI** CALX CEMENT MORTAR FINE | **POVRŠINSKI POSIP ZA INDUSTRIJSKE PODOVE** SURFACE COATING FOR INDUSTRIAL FLOORS | **MAŠINSKI ESTRIH** MACHINE SCREED

ZAŠTITA I DEKORACIJA ZA DRVO I METAL

WOOD AND METAL PROTECTION AND DECORATION



LAZURA - ZAŠTITA I DEKORACIJA DRVETA LASUR - WOOD PROTECTION AND DECORATION | **LAZURNI LAK - ZAŠTITA I DEKORACIJA DRVETA** LASUR VARNISH - WOOD PROTECTION AND DECORATION | **TEMELJNA BOJA ZA DRVO - OSNOVNA ZAŠTITA DRVETA** WOOD PRIMER **NITRO** - BASIC WOOD PROTECTION | **TEMELJNA BOJA ZA DRVO - OSNOVNA ZAŠTITA DRVETA** WOOD PRIMER **NITRO** - BASIC WOOD PROTECTION | **TEMELJNA BOJA ZA METAL - OSNOVNA ZAŠTITA METALA** METAL PRIMER - BASIC METAL PROTECTION | **TEMELJNA BOJA ZA METAL - OSNOVNA ZAŠTITA METALA** METAL PRIMER - **NITRO** BASIC METAL PROTECTION | **EMAIL - ZAŠTITA I DEKORACIJA DRVETA I METALA** EMAIL - WOOD AND METAL PROTECTION AND DECORATION | **EMAIL - ZAŠTITA I DEKORACIJA DRVETA I METALA** EMAIL - WOOD AND METAL PROTECTION AND DECORATION | **LAK ZA ČAMCE - BEZBOJNI LAK ZA DRVO** BOAT VARNISH - COLORLESS VARNISH FOR WOOD | **ZAVRŠNI LAK ZA DRVO - BEZBOJNI LAK ZA DRVO** **NITRO** TOP COAT FOR WOOD **NITRO** | **LAK ZA PARKET** VARNISH FOR PARQUET | **LJEPILO ZA PARKET** ADHESIVE FOR PARQUET | **1K AKRILNA BOJA MODIFIKOVANA SA PU VEZIVOM** 1C ACRYLIC PAINT MODIFIED WITH PU CONNECTIVE TISSUE | **SREDSTVO ZA UKLANJANJE HRĐE** RUST REMOVER | **INSEKTICIDNO FUNGICIDNA IMPREGNACIJA** TINCTURE FOR WOOD PROTECTION

**EPOKSIDNI
PODOVI
EPOXY FLOORS**

**RAZRJEĐIVAČI
THINNERS**

**BOJA ZA BAZENE
I PUTEVE
POOL AND ROAD
PAINTS**



POD ZA MINERALNE POVRŠIJE
FLOOR COATINGS FOR
MINERAL SURFACES



**ZA RAZRJEĐIVANJE BOJE
I PRANJE ALATA**
FOR PAINT DILUTION AND WASHING



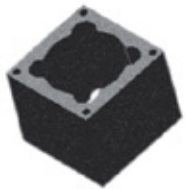
BOJA ZA PUTEVE
PAINT FOR ROADS

FABRIKA BETONSKE GALANTERIJE

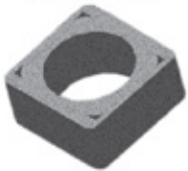
TEL. / FAX: +387 32 676 259

FACTORY OF CONCRETE PRODUCTS

EMAIL: proizvodnja@almy.ba

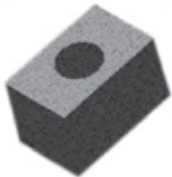


Plajt Ø400



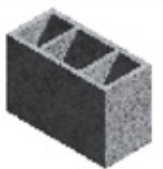
Odžak S-1

320X240X195 mm



Ventilacija D-5

250X540X330 mm



Ventilacija D-3

200X270X330 mm



| Betonski plaštovi | |
|-------------------|----------------|
| Plajt Ø160 | 340X340X330 mm |
| Plajt Ø200 | 390X390X330 mm |
| Plajt Ø250 / Ø300 | 500X500X330 mm |
| Plajt Ø400 | 700X700X330 mm |
| Plajt Ø160 / Ø200 | 680X390X330 mm |

Plajt Ø160/Ø200



Ventilacija D-2

260X390X195 mm



Ventilacija D-4

250X450X330 mm



Gabioni

2000X1000X1000 mm



Betonski branik

2000X1000X700 mm



Segmentni šaht

1500X1500X500 mm

1500X1200X500 mm

Plajt segmentnog šahta



Broj segmenta ovisi o dubini šahta!

Poklopac segmentnog šahta sa otvorom 600X600mm



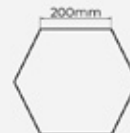
ALMY BETONSKI BLOK LEGO

1500X600X600 mm



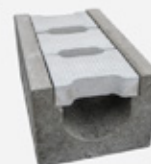
Betonski opločnici "PRIZMA"

200X200X200 mm



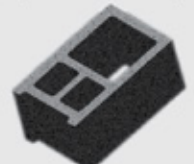
Kanalica betonska

50X 295X 22 mm



Element čošak N-25

390X240X195 mm





POSJEDUJEMO KOMPLETNU ATESTNU DOKUMENTACIJU

Dimenzija
240x195x390mm

Nosivi element N-25

| | |
|----------------------------|--------|
| Težina komada | 20 kg |
| Ugradnja na m ² | 13 kom |
| Pakovanje palete (EUR) | 48 kom |
| Težina palete | 960 kg |

Dimenzija
190x195x390mm

Nosivi element N-20

| | |
|----------------------------|---------|
| Težina komada | 15 kg |
| Ugradnja na m ² | 13 kom |
| Pakovanje palete (EUR) | 75 kom |
| Težina palete | 1125 kg |

Dimenzija
140x195x390mm

Nosivi element P-15

| | |
|----------------------------|---------|
| Težina komada | 13 kg |
| Ugradnja na m ² | 13 kom |
| Pakovanje palete (EUR) | 95 kom |
| Težina palete | 1235 kg |

Dimenzija
120x195x390mm

Nosivi element P-12

| | |
|----------------------------|---------|
| Težina komada | 11 kg |
| Ugradnja na m ² | 13 kom |
| Pakovanje palete (EUR) | 120 kom |
| Težina palete | 990 kg |

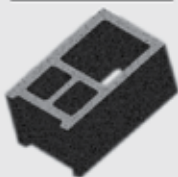
Dimenzija
100x195x390mm

Nosivi element P-10

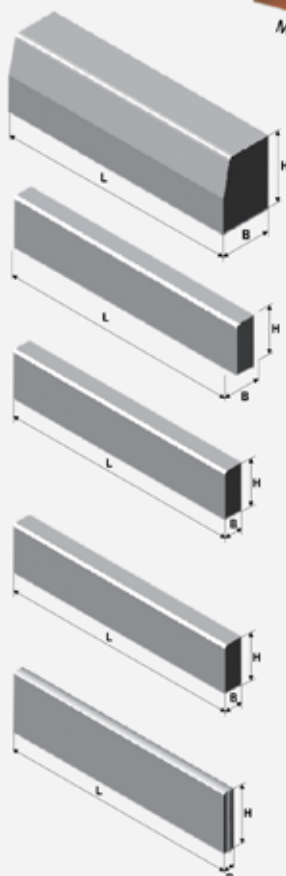
| | |
|----------------------------|---------|
| Težina komada | 9 kg |
| Ugradnja na m ² | 13 kom |
| Pakovanje palete (EUR) | 140 kom |
| Težina palete | 1260 kg |

Element čošak N-20

390X190X195 mm



Monta gredece raznih dimenzija!



Ivičnjaci

Trotoarski ivičnjak

| L | B | H |
|-------|-------|-------|
| 800mm | 180mm | 240mm |

Trotoarski ivičnjak

| L | B | H |
|-------|-------|-------|
| 800mm | 120mm | 150mm |

Ivičnjak L - 1000, 100mm

| L | B | H |
|--------|-------|-------|
| 1000mm | 100mm | 240mm |

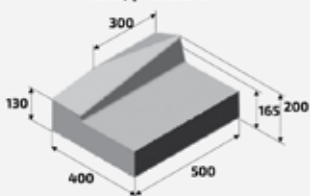
Ivičnjak L - 1000, 80mm

| L | B | H |
|--------|------|-------|
| 1000mm | 80mm | 240mm |
| 1000mm | 80mm | 200mm |
| 1000mm | 80mm | 170mm |

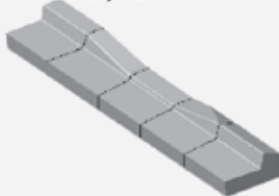
Ivičnjak L - 1000X240X50mm

| L | B | H |
|--------|------|-------|
| 1000mm | 50mm | 240mm |

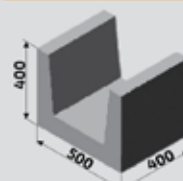
Rigolni ivičnjaci kosi, prelazni



Pogled na rigolne ivičnjake

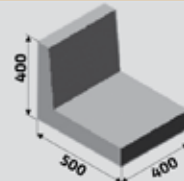


U elementi

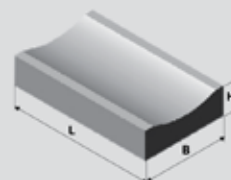


Primjenjuju se za uređenje vanjskog prostora, kao i kanalice.

L elementi



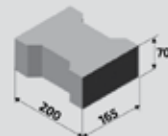
Primjenjuju se za uređenje vanjskog prostora.



Slivnik

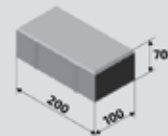
| L | B | H |
|-------|-------|-------|
| 500mm | 400mm | 120mm |
| 500mm | 300mm | 100mm |

Betonski pločnici Intera



Ugradnja m²: 36 kom
Boje pločnika: siva, crvena, zelena, žuta, smeđa, crna.

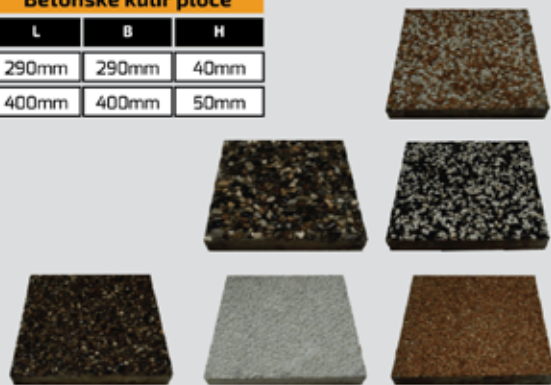
Betonski pločnici Domino



Ugradnja m²: 50 kom
Boje pločnika: siva, crvena, zelena, žuta, smeđa, crna.

Betonske kulir ploče

| L | B | H |
|-------|-------|------|
| 290mm | 290mm | 40mm |
| 400mm | 400mm | 50mm |



ALMY METALI

TEL. / FAX: +387 32 878 048

EMAIL: gradnjametali@almy.ba

Sektor ALMY METALI je dio kompanije Almy d.o.o. koja upravlja procesima na veoma efikasan i efektivan način.

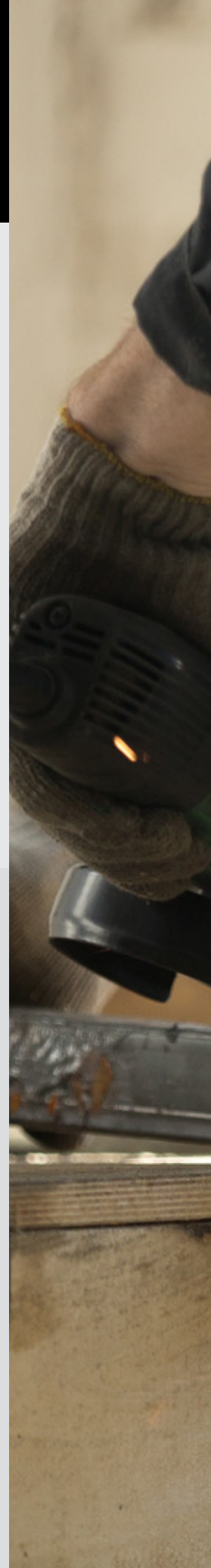
U našoj proizvodnji možete pronaći:

1. Aluminijska i PVC stolarija po mjeri: prozori, vrata, stijene, roletne, komarnici, garažna, sekciona, rolo vrata, vanjske i unutrašnje ALU i PVC klupice, brisoleji, itd.
2. Termoizolaciono dvoslojno i troslojno staklo, punjenje argonom, sa raznim tipovima i debljinama stakla: float, mraz, low-e, parsol, stopsol, satin deco, lamistal, kaljeno...
3. Aluminijske staklene fasade.
4. Čelične konstrukcije i bravarija: čelične konstrukcije hala, nadstrešnica, sve vrste bravarije od čeličnih profila (čelijska/zatvorska vrata, prozori, vrata, garažna vrata, giteri itd.), silosi za betonare, protivpožarne stepenice, ograde, kapije, itd.).
5. Protuprovalna jednokrlna i dvokrlna vrata.
6. Protivpožarna jednokrlna i dvokrlna vrata.
7. Metalna galanterija - hidrantski ormari, razvodni ormari za centralno grijanje, plinski razvodni ormari, ormari za vodomjere, poklopci šahte (suhe i mokre), podne rešetke, rešetke kanala, ankeri, vilice, uzengije, nosači, vrtne ljuljačke...
8. Limarski i krovopokrivački radovi - pokrivanje krovova svim tipovima lima (trapezni, u obliku crijepa, sinusni, samouklapajući), termopanelima (gorivi, negorivi, poliuretani ili vuna) ili polikarbonatnim pločama, oblaganje fasada limom ili termopanelima, izrada i montaža oluka, slivnika, opšava i ostalih proizvoda od plastificiranog čeličnog bojenog lima, aluminijskog bojenog, bakarnog ili pocinčanog lima. Debljina i boja po izboru kupca.

The ALMY METAL Sector is a part of the company Almy Ltd., which manages processes in a very efficient and effective manner.

In our production you can find:

1. Custom-made aluminum and PVC joinery: windows, doors, partitions, roller shutters, mosquito nets, garage doors, sectional doors, roller doors, external and internal aluminum and PVC window sills, blinds, etc.
2. Thermal insulation double and triple glazing, argon-filled, with various types and thicknesses of glass: float glass, frost glass, low-e glass, parsol glass, stopsol glass, satin deco glass, tempered glass, etc.
3. Aluminum glass facades,
4. Steel structures and locksmithing: steel hall structures, canopies, all types of locksmithing from steel profiles (cell/prison doors, windows, doors, garage doors, grates, etc.), concrete plant silos, fire escape stairs, fences, gates, etc.
5. Single and double-wing anti-burglary doors.
6. Single and double-wing fire doors.
7. Metal hardware - hydrant cabinets, central heating distribution cabinets, gas distribution cabinets, water meter cabinets, manhole covers (dry and wet), floor grates, channel grates, anchors, forks, clamps, brackets, garden swings, etc.
8. Sheet metal and roofing works - covering roofs with various types of sheet metal (corrugated, tile-shaped, sinusoidal, self-locking), thermal panels (flammable, non-flammable, polyurethane or wool) or polycarbonate sheets, cladding facades with sheet metal or thermal panels, gutter and downspout fabrication and installation, fascia and other products made of coated steel, coated aluminum, copper or galvanized steel. Thickness and color as per customer's choice.





- Stambeni kompleks MAKOVI Zenica**
Residential complex MAKOVI Zenica
- Stambeni objekat RESIDENCE Zenica**
Residential building RESIDENCE Zenica
- Stambeni objekat ROSULJE 3-D Vogošća**
Residential building ROSULJE 3-D Vogošća
- Stambeni objekat ROSULJE B1-B Vogošća**
Residential building ROSULJE B1-B Vogošća
- Stambeno poslovni objekat - hostel DAMIREX Zenica**
Residential and commercial building - hostel DAMIREX Zenica
- DŽAMIJA Varošište Zenica** MOSQUE Varošište Zenica
- ZGRADA KANTONALNOG TUŽILAŠTVA Zenica**
BUILDING OF THE CANTONAL PROSECUTOR'S OFFICE Zenica
- KPZ ZT - Kazneno-popravni zavod- Paviljon III i IX Zenica**
KPZ Correctional Institution - Pavilion III and IX Zenica
- Turski koledž Sarajevo** Turkish College Sarajevo
- Proizvodno - poslovni objekat Mesnica PAŠALIĆ Lašva**
Business and production facility "Mesnica Pašalić" Lašva
- KONTROLNI OBJEKAT NA KORIDORU V5 Donja Gračanica**
Zenica CONTROL FACILITY ON CORRIDOR V5 Donja Gračanica
- Pravno-Ekonomski Fakultet Zenica**
Faculty of Law and Economics Zenica
- Raiffeisen Banka Zenica** Raiffeisen Bank Zenica
- Hotel City Code (Caffe Author) Zenica**
Hotel City Code (Caffe Author) Zenica
- EDUKATIVNI INTERNAT II Zenica**
EDUCATIONAL BOARDING SCHOOL II Zenica
- DOM ZDRAVLJA Odžak** Health Institution Odžak
- BOSANSKO NARODNO POZORIŠTE Zenica**
BOSNIAN NATIONAL THEATER Zenica
- Poslovni objekat BSO - Bosna Sunce Osiguranje Zenica**
Business facility BSO - Bosna Sunce Osiguranje Zenica
- Poslovni objekat TISAKOMERC Žepče**
Business building TISAKOMERC Žepče
- Poslovni objekat BELLONA Zenica**
Business building BELLONA Zenica
- Poslovni objekat BELLONA Sarajevo**
Business building BELLONA Sarajevo
- Poslovni objekat "PHARMAMED d.o.o. Travnik**
Business facility "PHARMAMED d.o.o. Travnik
- Poslovni objekat AKOVA Sarajevo**
Business building AKOVA Sarajevo
- Poslovni objekat - VOKEL d.o.o. Posušje**
Business facility - VOKEL d.o.o. It's dry
- Poslovno-proizvodni objekat i silosi BAUMY Zavidovići**
Business and production facility and silos BAUMY Zavidovići
- Proizvodni objekti - MGV GRADNJA Zavidovići**
Production facilities - MGV GRADNJA Zavidovići
- Terminali Blažuj** Terminals Blažuj
- KPZ - IGMAN Sarajevo** KPZ - IGMAN Sarajevo
- ŠIP K30, K31** PILE K30, K31
- HENKOPROM Benzinska pumpa** HENKOPROM Petrol pump



ALMY



proizvodno transportno
trgovinsko preduzeće

Sedamdesetih godina prošlog stoljeća g. Ismet Begić ulazi u svijet biznisa kao samostalni autoprijevoznik. Krajem osamdesetih godina osniva preduzeće za proizvodnju, trgovinu i transport pod nazivom ALMY. Jasna vizija menadžmenta, predanost i profesionalan pristup zaposlenih doprinijeli su da preduzeće ALMY izraste u kompaniju koja posluje po ISO standardu te se ubraja među lidere na Bosanskohercegovačkom tržištu. Danas KOMPANIJA ALMY ima preko 500 zaposlenih osoba u svim sektorima, a broj zaposlenika povećava se iz dana u dan.

KOMPANIJA ALMY GRADNJA je kompletan, samostalan, fleksibilan i operativan stručni sistem koji je organizacijski, kadrovski i tehnički potpuno opremljen za realizaciju svih zadataka u području arhitektonskog i građevinskog rada na najvišem stručnom nivou. S našim stručnim osobljem i najkvalitetnijim materijalima koje koristimo, kao i materijalima iz vlastite proizvodnje (beton, asfalt, sljako-betonski elementi, betonska galanterija, drvena, PVC i aluminijska stolarija), možete biti sigurni u kvalitetu izvedenog rada.

In the seventies of the last century, Mr. Ismet Begić entered the business world as an independent transporter. In the late 1980s, he founded the firm for production, trade, and transportation named ALMY. A clear vision of management, dedication, and professional approach of the employees contributed to the firm ALMY becoming a company operating under the ISO standard and being among the leaders in the Bosnia and Herzegovina market. Currently, ALMY COMPANY has over 500 employees in all sectors, and the number of employees is increasing day by day.

ALMY CONSTRUCTION COMPANY is a complete, independent, flexible, and operationally professional system that is organizationally, personnel, and technically fully equipped to carry out all tasks in the field of architectural and construction work at the highest professional level. With our expert staff and the best materials we use, as well as our own production materials (concrete, asphalt, slate-concrete elements, concrete accessories, wood, PVC, and aluminum joinery), you can be assured of the quality of your work.

ALMY

ALMY BETON

BAUGENTARI

CERALMYCO

MOTEL ALMY

ALMY GRADNJA

ALMY METALI

W/ojo
Voda

AUTOSTEPA

ALMY BUSINESS CENTER

BIRAJTE NAJBOLJE,

KOMPANIJA ALMY

CHOOSE THE BEST, ALMY COMPANY



SKENIRAJTE ZA PREGLED SVIH SEKTORA
POSLOVANJA KOMPANIJE ALMY
SCAN TO OVERVIEW ALL ALMY BUSINESS SECTORS